

Pipeline Operation Safety Practices

- Regular inspections
- 24-hour monitoring of gas flow
- Internal pipeline inspections
- Leak surveys
- Work regulations
- Vegetation management
- Public information and education

Common Questions and Answers Regarding Gas Pipelines

The following are a few common questions and answers contained within the Inland Pacific Connector Information package.

Q: Who pays for the pipeline?

A: Costs will be paid by shippers who will use the IPC pipeline.

Q: If we agree to the development of this pipeline, what are the benefits to the Band and resi-

dents?

A: Compensation based on a percentage of the value of the land, property taxes, employment, business loss compensation, economic opportunities, and other benefits.

Q: Is it safe?

R: Yes, a pipeline crosses a residential area in Surrey.

What do you Think?

The center pages of this newsletter contains a map of the pipeline alignment proposed by **Terasen Gas**. Please review the map and contact us with your thoughts, ideas and concerns.

You can reach us over the Internet at DebSKAWAHL00K@aol.com or by phone at (604) 796-9533.

Attached to this newsletter you will find an information package prepared by **Terasen Gas** entitled *Status of Inland Pacific Connector Project*. Please review the entire information package and contact us if you require additional information and/or clarifications.

We hope to hear from you soon.

About this Update Newsletter

This Update Newsletter was completed by **Juan C. Cereño and Associates** as part of the management support services offered to the Skawahlook First Nation.

Please submit comments, questions and/or suggestions to the Skawahlook First Nation, attention

of Gina Peters, Band Administrator Trainee

We offer our sincere apologies for any potential errors and/or omissions.

Respectfully,

Juan C. Cereño , Social Planner



Debra Schneider , Manager of Lands and Natural Resources



Juan Cereño and Associates
Health and Social Planning Services

SKAWAHL00K FIRST NATION
UPDATE NEWSLETTER

Special Update Report to the Skawahlook Membership

SKAWAHL00K FIRST NATION REVIEWS PROPOSED PIPELINE ALIGNMENT WITH TERASEN GAS



Inside this issue:

Proposed pipeline alignment 2

Proposed pipeline alignment 3

Common Questions and Answers Regarding Pipelines 4

What do You Think? 4

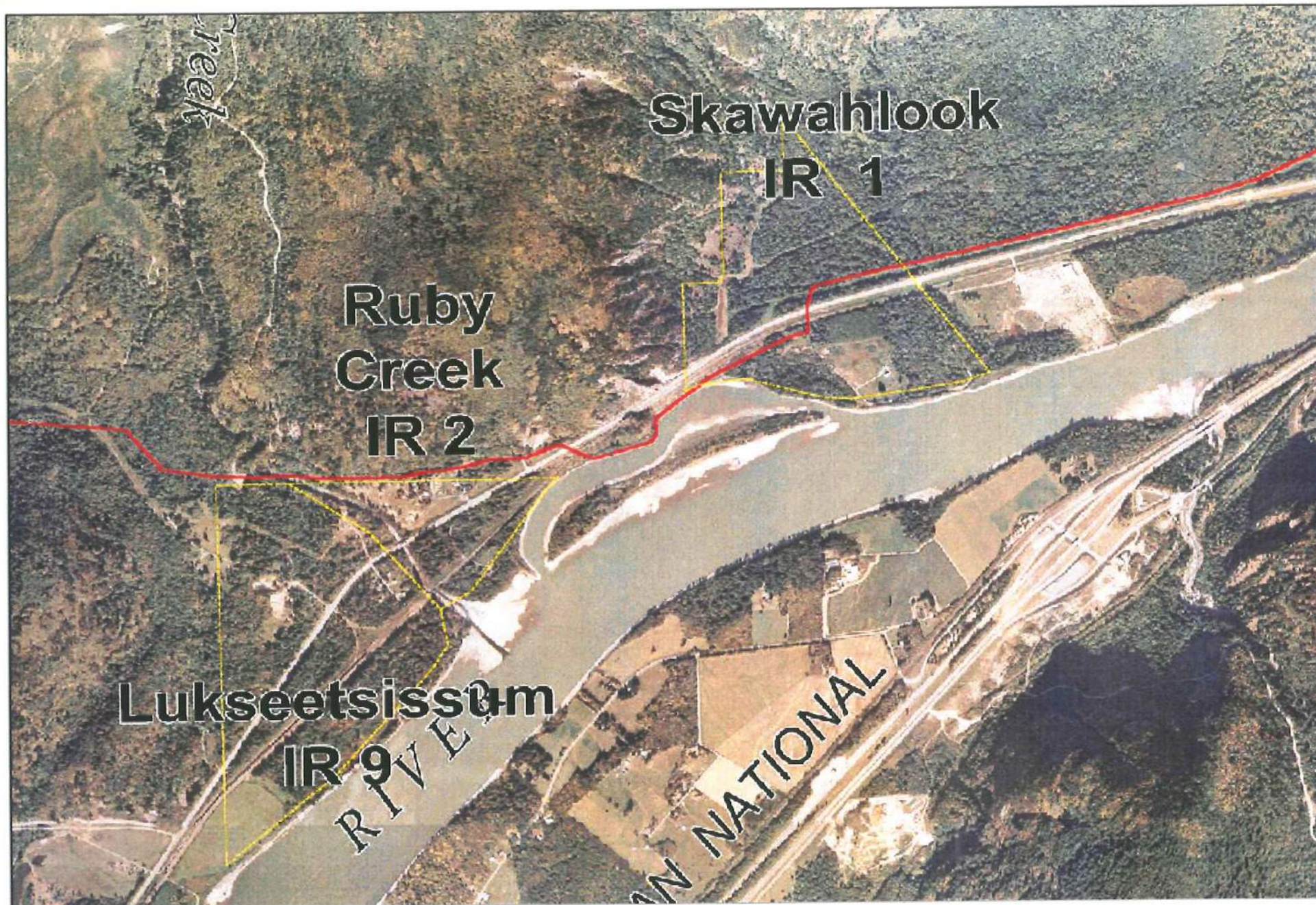
About This Update Newsletter 4

At a meeting held last April 25th in Abbotsford, Chief Maureen Chapman and Juan C. Cereño met with Ken Berry and Bruce Falstead from Terasen Gas (formerly known as B.C. Gas) to review the proposed pipeline alignment of the Inland Pacific Connector Project.

The proposed alignment of the pipeline is shown in the center pages of this newsletter. Community members are encouraged to review the map and communicate questions and/or concerns to Gina Peters or Debra Schneider by calling (604) 796-9533.

Skawahlook First Nation members are advised that the Chief and Council has made no agreements for land use at this time.

Please review the entire information package attached to this newsletter and call us with your concerns.



Red Line shows proposed Terasen Gas pipeline alignment

Yellow Line shows boundaries of Skawahlook reserve lands

DISCLAIMER

This map was supplied by Terasen Gas. Skawahlook First Nation and Juan Cereño & Associates accept no responsibility for errors contained within the map's boundaries.