



Sq'ewá:lxw Sqwélqwel

The Newsletter of the Sq'ewá:lxw First Nation Vision Project Issue #6 March 2018






March Sq'ép: Housing

We came together to talk housing, to hear what progress the housing committee has been making, and to reconfirm membership needs and desires.

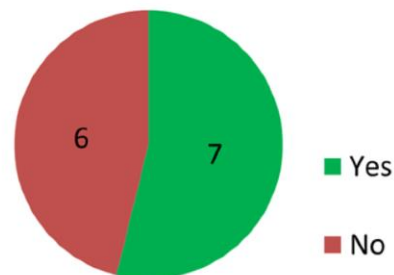
The housing team is ensuring that they are designing the housing program you need. Especially important right now is how many homes are needed, and what type they should be, and when will members be ready to participate?

In 2015 we conducted a large membership survey on housing. In preparation for the sq'ép we used a survey to check back in with members. If anything, interest in moving home has increased. Members want single detached housing, but there is recognition that that might be out-of-reach for some.

Our priorities as defined by the membership:

-  Affordability;
-  Fair and transparent processes;
-  Safety and security;
-  Three bedrooms;
-  Construction in the next three years.

If affordability was a barrier to owning a single detached house, would you seriously consider a multi-unit home?



If you missed our February sq'ép, you will find a summary video at this link: <https://youtu.be/HY5T5okxUNE>.



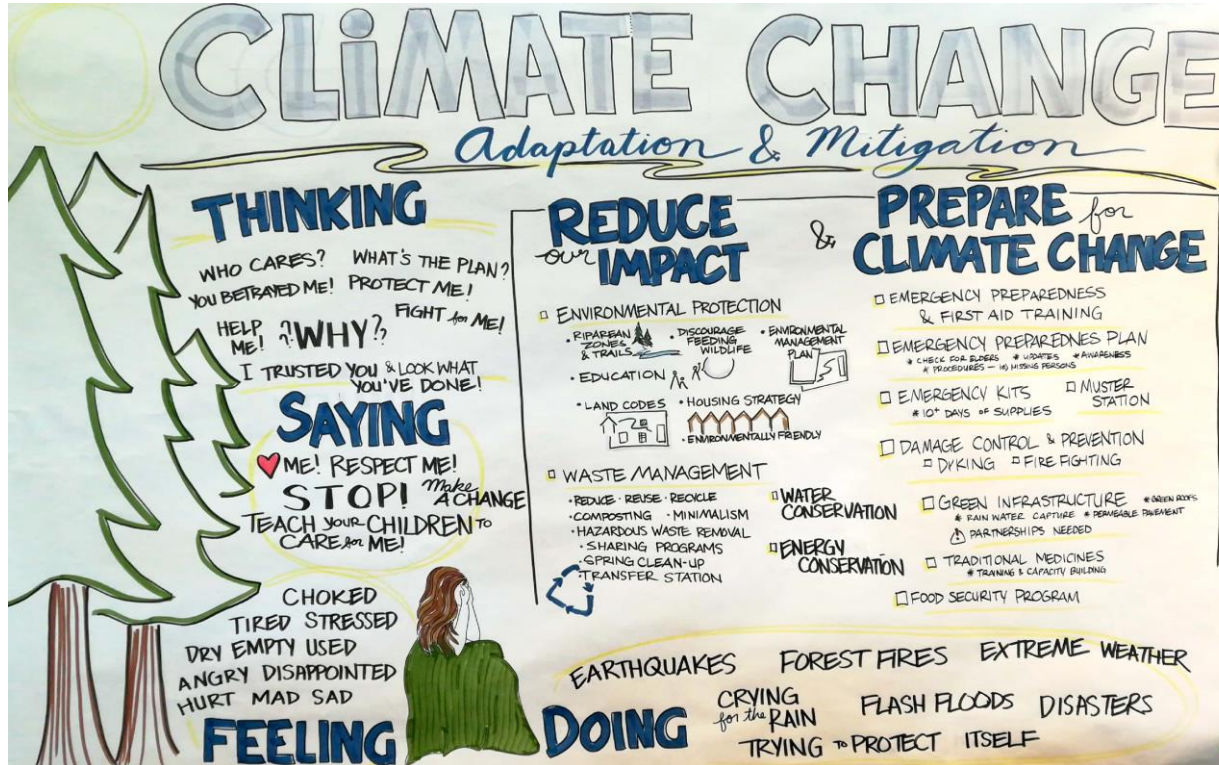
For further information please contact Sharron Young our Sq'ewá:lxw Nation Vision Champion!
(604) 796-9129 sharron@skawahlook.com







Sq'ewá:lxw Sqwélqwel

Climate Change and Emergency Planning

Our February sq'ép was dedicated to thinking about climate change and the mitigation of risk from all manner of emergencies.



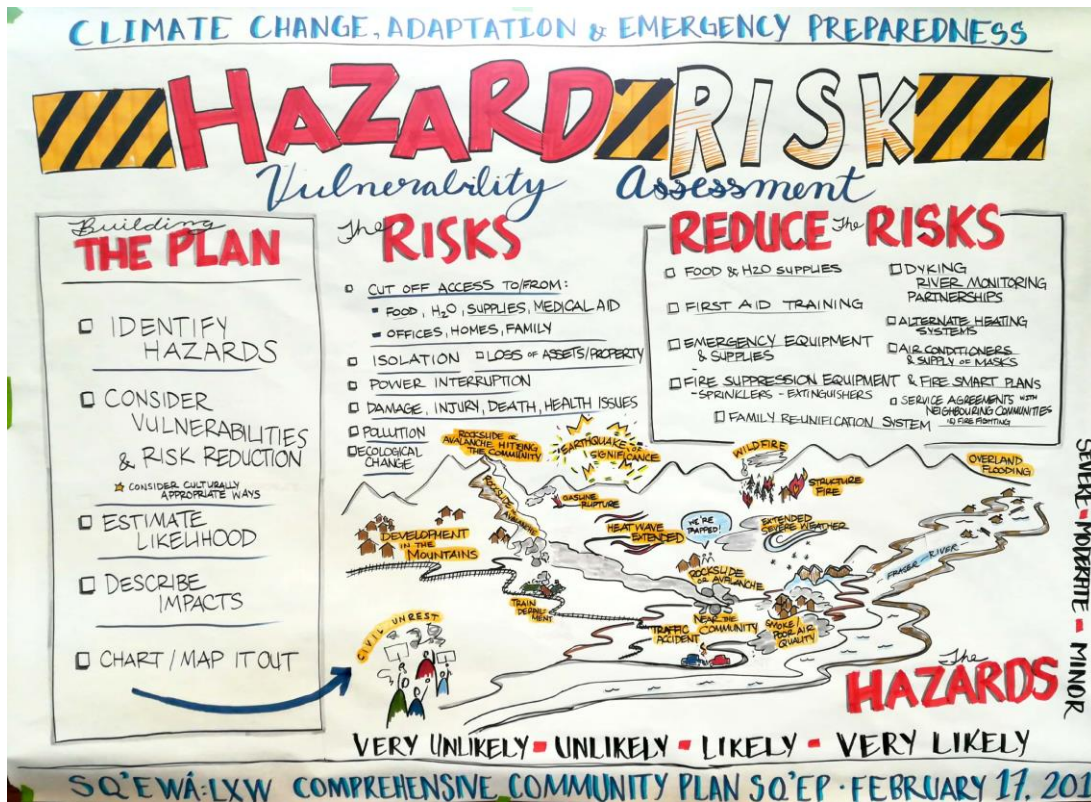
Inside this Sqwélqwel

-  Hazards and Risks - P3
-  Our Video Products - P5
-  Syéxw Chó:leqw Adventure Park - P6
-  April Sq'ép - P6



Sq'ewá:lxw Sqwélqwel

+



This work was in support of the Vision Project (comprehensive community plan) and funded by ADAPT, a Government of Canada program to help prepare for adaptation to a changing climate.

Canada 

Sq'ép (Gathering)

The *Halq'eméylem* word *sq'ép* means a meeting or a gathering. Our planning takes place within community engagement sessions which we are calling *sq'ép*.



Sq'ewá:lxw Sqwélqwel



Prizes!

We have door prizes at each sq'ép. In addition we are offering a grand prize of \$1,000 at the April session with entries accumulated by members by:

- Attendance at each sq'ép including attendance via Facebook Live;
- Submission of the feedback form from each sq'ép;
- Filling out surveys either online or in hardcopy;
- Submitting pictures, stories, etc.; and
- At the discretion of the planning champion in recognition of valuable contributions.

We also will be giving a guaranteed prize of \$50 for the ones who attend all meetings and complete all surveys.



Sq'ewá:lxw Sqwélqwel

Videos

Please follow these links for a complete video summary of what we have been accomplishing together!

Project Vision Video See what we set out to do at this link:
<https://youtu.be/IBCV5maxLC4>

Introduction to CCP Learn about the process at this link:
<https://youtu.be/SIVq2fN-sEs>

Fishing Lands and Resources In August we had a great conversation on fish and fishing: <https://youtu.be/IXHc8mMnk3A>

Culture At our September Sq'ép we talked culture. <https://youtu.be/5yAicHo0Kmq>

Education If you missed our October Sq'ép you will find a summary video at this link:
<https://youtu.be/F5NBUVrl43c>

Climate Change and Emergency Management Here is the link to our February sq'ép recap: <https://youtu.be/HY5T5okxUNE>



Sq'ewá:lxw Sqwélqwel

Syéxw Chó:leqw Adventure Park

Next time you are out towards Ruby Creek stop in and check out our new trails and playground.



April Sq'ép

What we have heard: One Year of Community Planning!

At our next Sq'ép we will be reporting out on a year's progress and looking to the community on planning for next year.

Saturday April 28th, 2018

11:30 am at Stó:lō Government House

7201 Vedder Rd, Chilliwack, BC (Building 8B)

We will have lunch and then discussions in the circle until 3:30 pm.

